

Your Eye Care is Our Number One Concern

At TLC Eyecare and Laser Centers, we are committed to providing premier eye care service. Our state-of-the-art diagnostic equipment allows early diagnosis of common eye problems such as cataract, glaucoma, macular degeneration, and diabetic retinopathy, often before symptoms occur. Our board-certified ophthalmologists and optometrists use the newest technologies and treatments available in the United States today, allowing us to treat eye ailments safely and effectively.

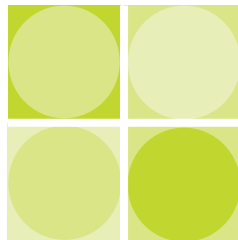
Offering State-of-the-Art Eye Care to Our Patients

Vision is one of the most important of the five senses, and healthy eyes are necessary for good vision. Eye problems can occur at any age, but the chance for developing them increases as we age. Vision problems can affect a person's overall health, causing disability, stress, and a decreased quality of life.

Early detection of eye problems is vital for maintaining healthy eyes. Diagnosing an eye disease in its early stages minimizes its damage and greatly affects the success of treatment. Because many eye ailments have no symptoms until their advanced stages, regular and thorough eye exams with our affiliate network of optometrists are necessary throughout your lifetime to help maintain healthy eyes.

We Make it Easy for You To Maintain Healthy Eyes

With several centers located throughout Michigan and Ohio, our patients enjoy easy access to quality eye care whenever and wherever they need it. Because TLC Eyecare and Laser Centers have doctors on call twenty-four hours a day, seven days a week, our patients have immediate access to treatment for unforeseen eye injuries and accidents.



877.TLC.TIME (877.852.8463)
www.tlceyecare.com

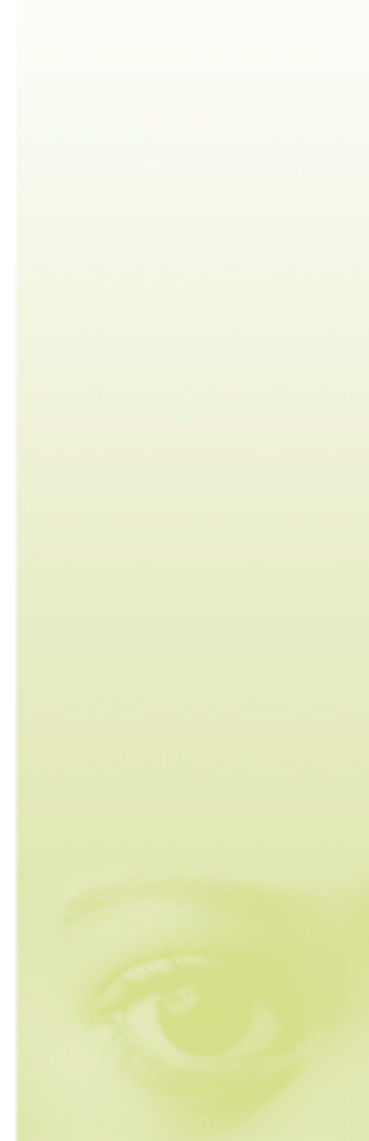
Locations Include:

Adrian, Ann Arbor, Battle Creek, Bellevue, Big Rapids, Bowling Green, Bryan, Chelsea, Farmington Hills, Jackson, Kalamazoo, Lansing, Sandusky, Toledo



TLC
 EYECARE & LASER CENTERS

Uveitis



Take a Closer Look®

877.852.8463



What is uveitis?

The eye is shaped much like a tennis ball, with three different layers of tissue surrounding the central gel-filled cavity. The innermost layer is the **retina**, which senses light and helps to send images to your brain. The middle layer between the sclera and retina is called the **uvea**. The outermost layer is the **sclera**, the strong white wall of the eye. Uveitis (pronounced you-vee-EYE-tis) is inflammation of the uvea.

What is the importance of the uvea?

The uvea contains many blood vessels—the veins, arteries, and capillaries—that carry blood to and from the eye. Since the uvea nourishes many important parts of the eye (such as the retina), inflammation of the uvea can damage your sight.

What are the symptoms of uveitis?

- light sensitivity
- blurred vision
- pain
- floaters
- redness of the eye

Uveitis may develop suddenly with redness and pain or with a painless blurring of your vision. A case of simple "red eye" may in fact be a serious problem of uveitis. If your eye becomes red or painful, you should be examined and treated by an ophthalmologist.

What causes uveitis?

Uveitis has many different causes:

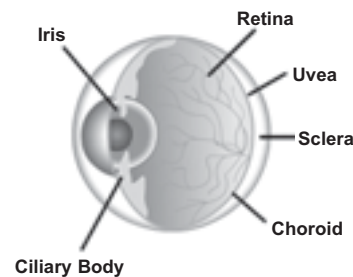
- a virus, such as shingles, mumps, or herpes simplex
- a fungus, such as histoplasmosis
- a parasite, such as toxoplasmosis
- a related disease in other parts of the body, such as arthritis, gastrointestinal disease, or collagen vascular disease such as lupus
- a result of injury to the eye

In most cases of uveitis, the cause of the disease remains unknown.

Are there different kinds of uveitis?

There are three different types of uveitis depending on which part of the eye is affected.

- **iritis**—inflammation near the front of the eye in the iris, sudden onset and may last six to eight weeks
- **cyclitis**—inflammation in the middle of the eye affecting the muscle that focuses the lens, sudden onset and may last for several months
- **choroiditis**—inflammation in the back of the eye, slower to develop and may last longer



How is uveitis diagnosed?

A careful eye examination by an ophthalmologist is extremely important when symptoms occur. Inflammation inside the eye can permanently affect sight or even lead to blindness if it is not treated.

Your ophthalmologist will examine the inside of your eye. He or she may order blood tests, skin tests, or x-rays to help make the diagnosis.

Since uveitis can be associated with disease in other parts of the body, your ophthalmologist will want to know about your overall health. He or she may want to consult with your primary care physician or other medical specialists.

Uveitis can be associated with these conditions:

- glaucoma (increased pressure in the eye)
- cataract (clouding of the eye's natural lens)
- neovascularization (growth of new, abnormal blood vessels)
- damage to the retina, including retinal detachment

These conditions also may need treatment with eyedrops, conventional surgery, or laser surgery. If you have a "red eye" that does not clear up quickly, contact your ophthalmologist.

How is uveitis treated?

Uveitis is a serious eye condition that may scar the eye. It needs to be treated as soon as possible.

Eyedrops, especially corticosteroids and pupil dilators, can reduce inflammation and pain. For more severe inflammation, oral medication or injections may be necessary.